

## Highway 2000 – A New Experience



Welcome to Highway 2000. It brings our communities closer together, by improving road linkages, reducing journey times and creating commercial opportunities. It also brings some new driving challenges for many of us and we want you to enjoy the benefits of the new road –SAFELY. Observe the following safety tips to avoid accidents.

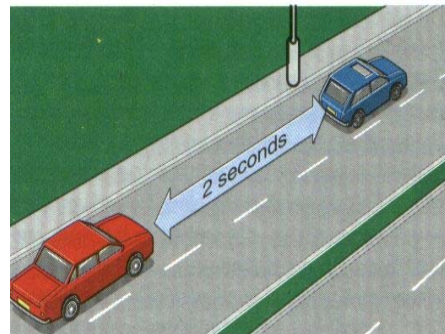
### YOUR VEHICLE

1. Driving on the highway means higher speeds than normal and your vehicle must be in good mechanical condition.
  - Have sufficient fuel for the journey as there are no filling stations on the highway
  - Your tyres must be in good condition, properly inflated and able to withstand the higher speeds at which you will travel.
  - Excessively worn (less than 1.66mm thread depth) or under inflated tyres will not stand up to the highway speed. The result will be overheating, sidewall cracking, or blow-out, which can lead to an accident.

2. You should not drive if you feel tired or ill. Driving may induce drowsiness. On the highway you will have to concentrate more, not less. If you are tired, you may fall asleep at the wheel.
3. **Do not stop to rest on the hard shoulder**, it is for emergencies only.
4. Do not litter the roadway. This is a breach of the law and dangerous to other motorists

### ON THE HIGHWAY

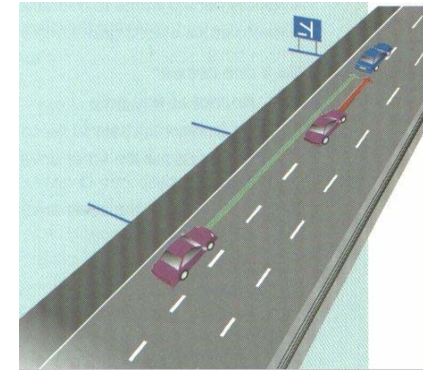
5. Be courteous at the toll plaza. Have the correct change to avoid delays.
6. Drive at a steady cruising speed at which you and your vehicle can handle safely.
7. Keep a safe distance, about a 2 second gap, from the vehicle in front, and increase the gap on wet roads or in misty conditions.



8. DO NOT exceed the 110 kph maximum speed limit or any speed limit imposed on a specific class of motor vehicle or, any temporary speed limit imposed during road works or maintenance.
9. DO NOT reverse, cross the central reservation or drive against the traffic flow. If you have missed your exit or have

taken the wrong route, continue to the next exit.

10. When transporting loads: sand, gravel, lumber or any other material, have it properly strapped to or secured within the vehicle
11. **Lane Discipline**
  - **Motorist should drive on the left, unless when overtaking. As soon as you have finished overtaking, return to the left hand lane.**



- When approaching a junction make sure you are in the correct lane; at some junctions a lane may lead directly off the highway. Be prepared for traffic leaving and joining the Highway.

If you intend to leave the highway, ensure you are in the left hand lane in plenty of time and indicate your intention to leave at the 300-metre marker board.

### 12 Overtaking

Do not overtake unless you can see that it is safe to do so. Overtake only on the right,

- Observe the usual precautions applicable when overtaking
- Remember traffic will be coming up behind you very quickly. Check your mirrors very carefully and make an effort to judge speeds correctly.

### 13. Stopping

- Do not stop on the highway unless, ordered to do so by the Traffic Authority or the police, or forced to stop because of stationary traffic.
- DO NOT let off or pick up any person or walk onto the Highway.  
**Pedestrians are not allowed on the Highway.**

### 14. Hard Shoulder

- The Highway is equipped with an emergency hard shoulder. **This is not a running lane and should not be used for overtaking.**

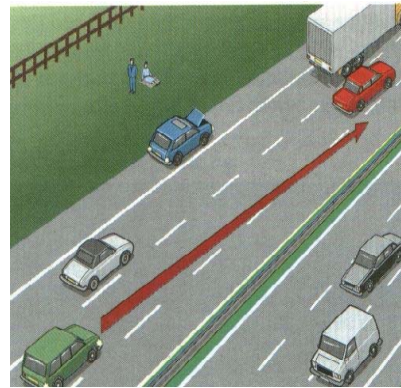


- Only use the hard shoulder in an emergency or if ordered to do so by the Traffic Authority or a police officer.
- If you have to stop on the hard shoulder in an emergency, pull over as far as possible to the nearside, set your

hazard lights on and park lights if it is night, then vacate the vehicle. A vehicle on the hard shoulder is at risk from passing traffic.

### 15. Blind Spot

Be aware of blind spots- points at which vehicles following behind or overtaking outside the visible range of your rear-view mirror. Every precaution must be taken when changing lanes



## EMERGENCIES

### 16. Vehicle Problems

- If your vehicle starts to act up, move to the left hand lane and use the available call box to get assistance.
- In the event of a breakdown, a wrecker will be called and if the vehicle is in an unsafe position it will be towed away regardless, and at the driver expense
- If you have to change a tyre, place an appropriate disabled warning sign 150m behind the vehicle.
- Avoid standing with your back to the traffic and do not stand at the rear of a vehicle as you may be hit during nightfall or in poor visibility. The

practice can also prevent other drivers from seeing your rear lights.

- If the problem is going to last more than a few minutes **you should use the roadside EMERGENCY PHONE to get help.**
- **Never leave a child or children unattended in a vehicle.**
- If something falls from your vehicle pull onto the hard shoulder and if possible to do so safely, retrieve it from the roadway. If traffic is too heavy, **use the roadside emergency phone to summon help.**

### 17. Accidents

If you see an accident or are involved in a collision, get to a safe place and call for help on the roadside EMERGENCY PHONE. **DO NOT remain on the carriageway** as traffic will be approaching at full speed and there is risk of further collisions.

## LEAVING THE HIGHWAY

18. When approaching your exit, check your speed as it may be higher than you think, and the road you are joining will have a lower speed limit.
19. Move into the left hand lane well before your exit, signal clearly your intention and ensure you do not inconvenience other road users.

**REMEMBER “Road Safety Begins with You”.**